



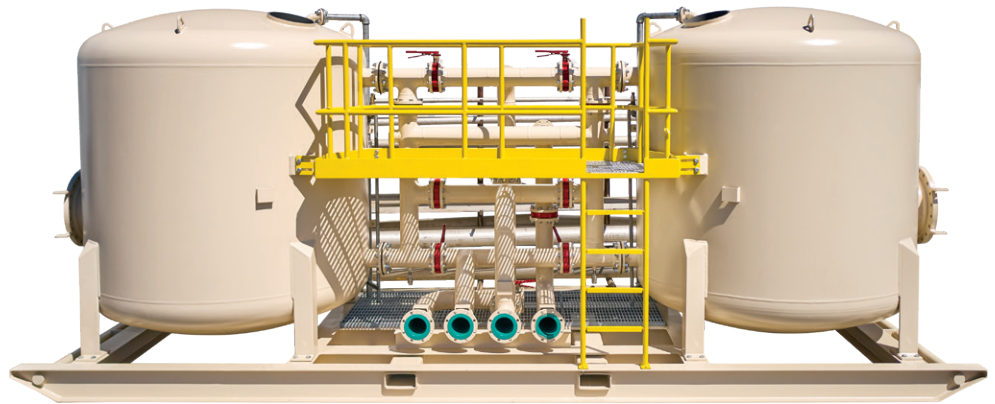
Large Vessel Filters

Pressure Vessels
72" and larger
in diameter

Yardney Large Filtration Vessels

are designed for enhanced water quality filtration applications specific for larger flow rate applications.

These filters may be used as a stand-alone system or in conjunction with or as a pretreatment for other filtration technologies.



Applications

- Removal of organic and/or inorganic suspended solids
- Storm water runoff, industrial process water, incoming plant water, waste water clean-up, industrial water for plant reuse
- PFAS, PFOA & PFOS applications
- Prefiltration in applications such as granular activated carbon, reverse osmosis, cartridge or bag filtration and deionized water
- 100 psi standard operating pressure (high pressure systems available)

Advantages

- ASME Code or non code construction
- Head and Lateral Underdrain or Vertical Septas
- Designed and engineered to your specifications including optional materials of constructions, manways, process nozzles, paint and coatings, etc.
- Standard alone vessels or a full tailored system is available
- Made in USA



Large Vessel Filters

Specifications

| SPECIFICATIONS INDUSTRIAL LARGE VESSEL FILTERS | | | | | | | | | | | | | | | | |
|--|---------------------------|---------------------|-------|---------|-------|---------------------------------------|-------------------------------|-------|---------------------------------|-------|------------------------|------------------------|------------------------|---------------------------------|-------------------------|----------------------------------|
| Model | Number of Tanks in System | Standard Flow Range | | | | Filtration Surface Area (total sq ft) | Backwash Flow Rate (per tank) | | Media Requirements (cubic feet) | | Maximum Pressure (PSI) | Maximum Pressure (BAR) | Inlet/Outlet Pipe Size | Inlet/Outlet Pipe Size (Metric) | Backwash Line Pipe Size | Backwash Line Pipe Size (Metric) |
| | | Minimum | | Maximum | | | gpm | m³/hr | Gravel 1/2" - 3/4" | Media | | | | | | |
| | | gpm | m³/hr | gpm | m³/hr | | | | | | | | | | | |
| 7248-1 | 1 | 283 | 64 | 424 | 96 | 28.27 | 424 | 96 | 31 | 113 | 125 psi | 8.6 | 6" | DN150 | 6" | DN150 |
| 7260-1 | 1 | 283 | 64 | 424 | 96 | 28.27 | 424 | 96 | 31 | 141 | 125 psi | 8.6 | 6" | DN150 | 6" | DN150 |
| 9648-1 | 1 | 503 | 114 | 754 | 171 | 50.27 | 754 | 171 | 72 | 201 | 125 psi | 8.6 | 6" | DN150 | 6" | DN150 |
| 9660-1 | 1 | 503 | 114 | 754 | 171 | 50.27 | 754 | 171 | 72 | 251 | 125 psi | 8.6 | 6" | DN150 | 6" | DN150 |
| 12048-1 | 1 | 785 | 178 | 1178 | 268 | 78.54 | 1178 | 268 | 137 | 314 | 125 psi | 8.6 | 8" | DN200 | 8" | DN200 |
| 12060-1 | 1 | 785 | 178 | 1178 | 268 | 78.54 | 1178 | 268 | 137 | 393 | 125 psi | 8.6 | 8" | DN200 | 8" | DN200 |
| 14448-1 | 1 | 1131 | 257 | 1696 | 385 | 113.10 | 1696 | 386 | 235 | 452 | 125 psi | 8.6 | 10" | DN250 | 10" | DN250 |
| 14460-1 | 1 | 1131 | 257 | 1696 | 385 | 113.10 | 1696 | 386 | 235 | 565 | 125 psi | 8.6 | 10" | DN250 | 10" | DN250 |

Available Options:

- ASME code
- High pressure
- Customer filter station layout piping
- Air scour
- Continuous flow
- Rinse to waste
- Vessels only or complete assembled filtration systems
- Skid, process pipe work, valves and automation
- Alternative under-drain options of Hub and Lateral, Head and Lateral or Septa
- Alternative linings utilizing NSF and non NSF approved materials



Made in USA

Phone: 951.656.6716
Toll-Free: 800.854.4788
Fax: 951.656.3867
info@yardneyfilters.com



www.yardneyfilters.com